



**REGIONAL SPECIALISED METEOROLOGICAL CENTRE-TROPICAL CYCLONES, NEW DELHI  
TROPICAL WEATHER OUTLOOK**

**DEMS-RSMC TROPICAL CYCLONES NEW DELHI DATED 01.06.2024**

**TROPICAL WEATHER OUTLOOK FOR NORTH INDIAN OCEAN (THE BAY OF BENGAL AND THE ARABIAN SEA) VALID FOR NEXT 168 HOURS ISSUED AT 0600 UTC OF 01.06.2024 BASED ON 0300 UTC OF 01.06.2024.**

**BAY OF BENGAL:**

A CYCLONIC CIRCULATION LAY OVER EASTCENTRAL ADJOINING SOUTHEAST BAY OF BENGAL BETWEEN 3.1 & 5.8 KM ABOVE MEAN SEA LEVEL TILTING SOUTHWESTWARDS AT 003 UTC OF TODAY'S, 1<sup>ST</sup> JUNE, 2024.

A CYCLONIC CIRCULATION LAY OVER COASTAL ANDHRA PRADESH & NEIGHBOURHOOD AT 1.5 KM ABOVE MEAN SEA LEVEL AT 003 UTC OF TODAY'S, 1<sup>ST</sup> JUNE, 2024.

SCATTERED LOW AND MEDIUM CLOUDS WITH EMBEDDED INTENSE TO VERY INTENSE CONVECTION LAY OVER WESTCENTRAL BAY OF BENGAL ADJOINING ANDHRA PRADESH COAST, EASTCENTRAL BAY OF BENGAL, SOUTH BAY OF BENGAL, ANDAMAN SEA, GULF OF MARTABAN & TENASSERIM COAST (MINIMUM CLOUD TOP TEMPERATURE - 85-93 ° CELSIUS).SCATTERED LOW AND MEDIUM CLOUDS WITH EMBEDDED ISOLATED WEAK CONVECTION LAY OVER NORTH BAY OF BENGAL.

**\*PROBABILITY OF CYCLOGENESIS (FORMATION OF DEPRESSION) DURING NEXT 168 HRS:**

24 HOURS	24-48 HOURS	48-72 HOURS	72-96 HOURS	96-120 HOURS	120-144 HOURS	144-168 HOURS
NIL	NIL	NIL	NIL	NIL	NIL	NIL

**\*NOTE: EVERY 24HR FORECAST IS VALID UPTO 0300 UTC (0830 IST) OF NEXT DAY**

**ARABIAN SEA:**

A CYCLONIC CIRCULATION LAY OVER SOUTHEAST ARABIAN SEA OFF SOUTH KERALA SEEN BETWEEN 5.8 & 7.6 KM ABOVE MEAN SEA LEVEL AT 003 UTC OF TODAY'S, 1<sup>ST</sup> JUNE, 2024.

SCATTERED LOW AND MEDIUM CLOUDS WITH EMBEDDED INTENSE TO VERY INTENSE CONVECTION LAY OVER SOUTHEAST ARABIAN SEA ADJOINING KERALA COAST & COMORIN AREA (MINIMUM CLOUD TOP TEMPERATURE - 85-93 ° CELSIUS). SCATTERED LOW AND MEDIUM CLOUDS WITH EMBEDDED MODERATE TO INTENSE CONVECTION LAY OVER SOUTH PARTS OF EASTCENTRAL ARABIAN SEA REST OF SOUTHEAST ARABIAN SEA, LAKSHADWEEP ISLANDS AREA, MALDIVES AREA AND ISOLATED WEAK TO MODERATE CONVECTION LAY OVER WESTCENTRAL & SOUTHWEST ARABIAN SEA.

**\*PROBABILITY OF CYCLOGENESIS (FORMATION OF DEPRESSION) DURING NEXT 168 HRS:**

24 HOURS	24-48 HOURS	48-72 HOURS	72-96 HOURS	96-120 HOURS	120-144 HOURS	144-168 HOURS
NIL	NIL	NIL	NIL	NIL	NIL	NIL

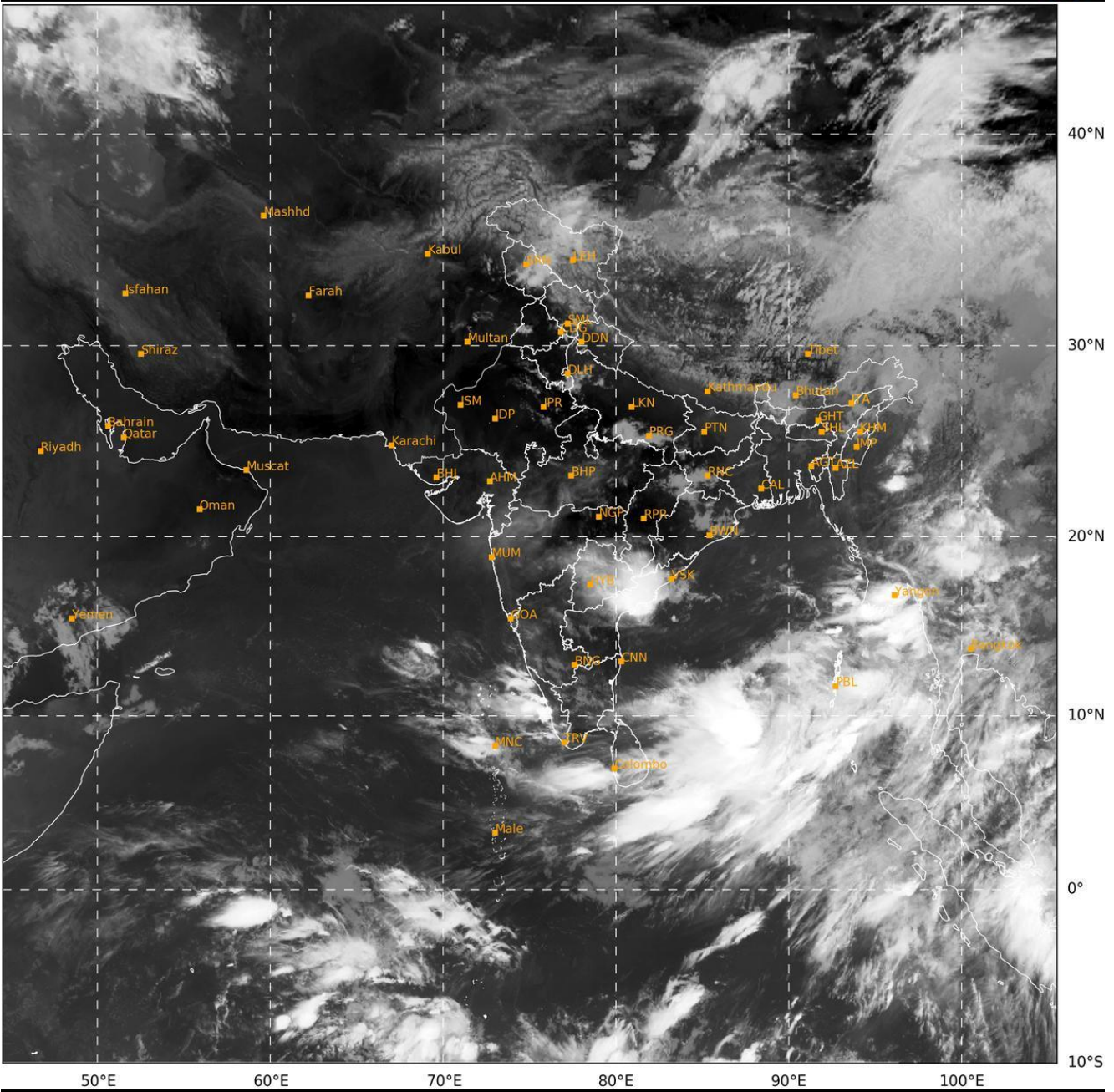
**\*NOTE: EVERY 24HR FORECAST IS VALID UPTO 0300 UTC (0830 IST) OF NEXT DAY**

**REMARKS:**

NIL

SAT : INSAT-3D IMG  
 IMG\_TIR1 10.8 um  
 LIC Mercator

01-06-2024/(0300 to 0327) GMT  
 01-06-2024/(0830 to 0857) IST



396

938

IMD, DELHI

Cloud distribution: (a) Isolated: <25%, Scattered:25-50%, Broken: 51-75%, Solid:>75%, Convection Intensity: (a) Weak: Cloud Top Temperature (CTT) >-25°C, (b) Moderate: CTT: - 25°C to -40°C, (c) Intense: CTT: - 41°C to -70°C and (d) Very Intense: : Less than -70°C  
**PROBABILITY OF CYCLOGENESIS (FORMATION OF DEPRESSION):NIL: 0%, LOW: 1-33%, , MODERATE: 34-66% AND HIGH: 67-100%**  
 This is a guidance Bulletin for WMO/ESCAP Panel Member countries. Visit respective National websites for Country specific Bulletins

